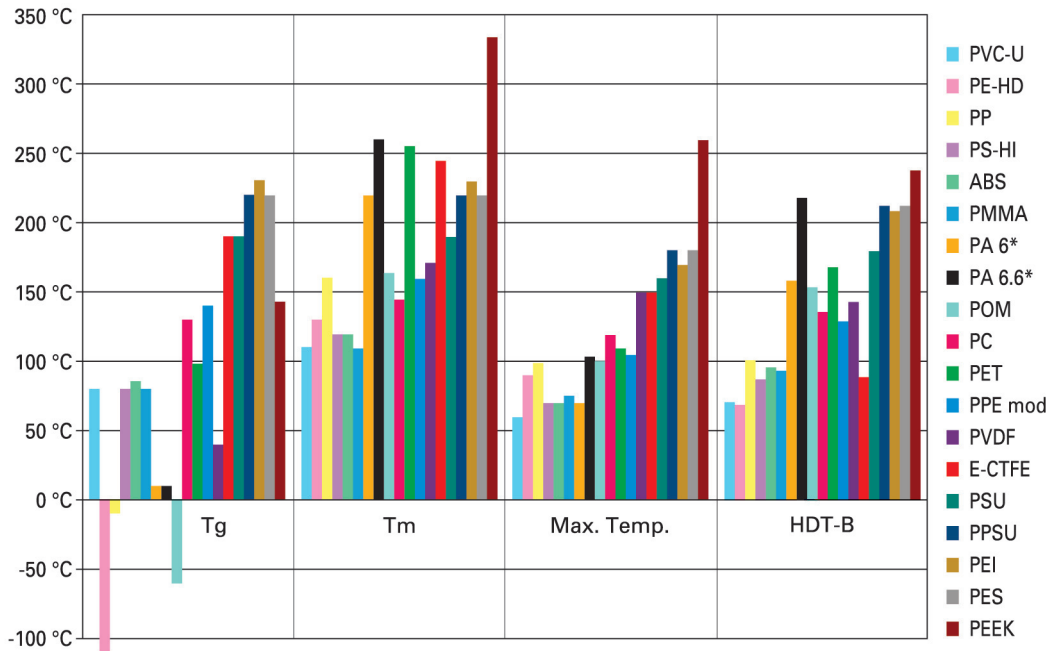
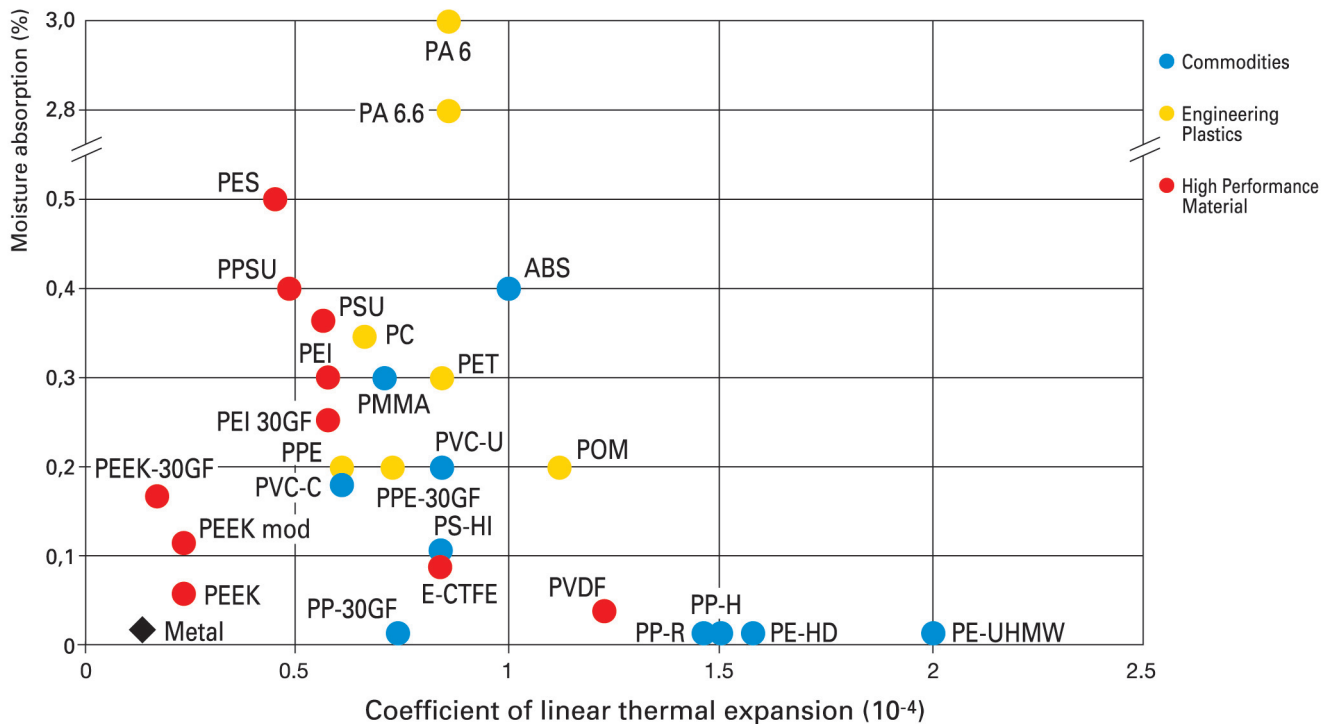


thermal guidelines



Tg = Glass Transition Temperature Max. Temp. = Maximum Service Temperature (UL 746B)
 Tm = Melting Temperature HDT-B = Heat Distortion Temperature (B = Specific Measurements)
 *Conditioned (in water)

precision parameters



Due to a policy of continual product development, Oadby Plastics Ltd reserves the right to alter any of the specifications given without prior notice. The specification for any given application must be checked with Oadby Plastics Ltd prior to manufacture. No responsibility for accuracy is accepted by Oadby Plastics Ltd.



the people for plastics

Leading stockholders & processors of fabrication, engineering & display plastics